

Taking the Confusion out of Emergency Management (EM)



Mike Dever, Emergency Management Consultant
 Tom Kline, Risk Control Manager
 Mary Beth O'Connell, Risk Control Manager

Copyright © Bickmore Risk Services



Learning Objectives

- Understand core emergency planning process and functions
- Be able to discuss the differences and similarities between public and private sector emergency management
- Be able to develop a common sense workplace emergency action plan

Copyright © Bickmore Risk Services



Workplace Emergency Management

- Cal/OSHA Standards
 - 3203 - Injury and Illness Prevention Program
 - **3220 - Emergency Action Plan**
 - 3221 - Fire Prevention Plan
 - 3315 - Heat Illness
 - 3400 - Medical Services and First Aid
 - 5157 - Confined Space Entry
 - 5189 - Process Safety Management of Acutely Hazardous Materials
 - 5192(q) - Hazardous Waste Operations and Emergency Response

Copyright © Bickmore Risk Services



Emergency Management Focus



Copyright © Bickmore Risk Services



6

What's In It For Me?

- What happens SECOND?
- YOU are responsible for your agency's ability to function.



Copyright © Bickmore Risk Services



Emergency Action Planning

- From a Risk Management /Liability perspective...
 - Your Organization has an Emergency Management Plan, why didn't your Department have a corresponding Action Plan for its functions?
 - If your Department had an Emergency Action Plan, why didn't you follow it?

Copyright © Bickmore Risk Services



The Policy/ROI Dilemma

- EM Planning is not the core mission of most agencies
 - It's seen as diverting scarce staff and budget resources
 - The investment does not deliver daily services to the public



Copyright © Backhaus Risk Services



Setting up Success in EM

- Know your mandates (e.g., Cal/OSHA)
- Know your jurisdictional authorities
- Plan to do what you have the capacity to do – not more



Copyright © Backhaus Risk Services



Setting up Success in EM

- Keep planning, Training & Exercise workloads manageable
- Key Knowledge, Skills and Abilities are already present
- Fit to your organization's culture



Copyright © Backhaus Risk Services



Effective Emergency Management



Copyright © Bickmore Risk Services



We respond to the impacts from a Hazard...



...not to the Hazard itself

Copyright © Bickmore Risk Services



Hazards vs. Threats

- **Hazard Analysis** defines potential risks
- **Threat Assessments** define probable impacts
 - Provide the basis for planning based on reasonable exposures from those threats

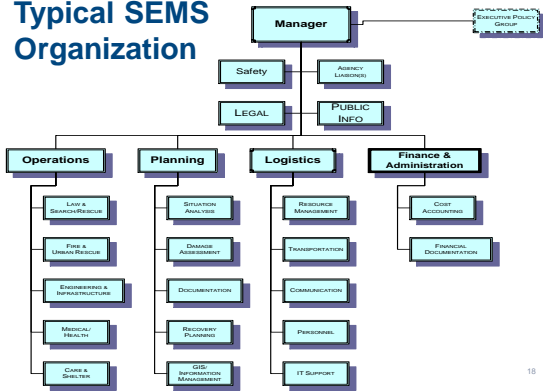


Copyright © Bickmore Risk Services



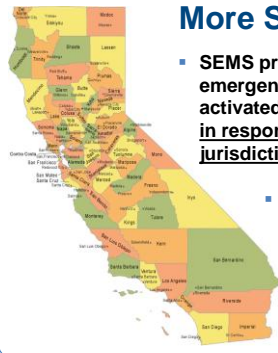
14

Typical SEMS Organization



18

More SEMS/NIMS



SEMS provides for a five-level emergency response organization, activated as needed, but particularly in response to multi-agency or multi-jurisdiction emergencies.

- The 5 SEMS levels are:
 - Field (ICS)
 - Local government
 - Operational Area – typically a County
 - Region
 - State

Copyright © Bickmore Risk Services



19

What to Include in Your Plan?

- Your NIMS/SEMS organizational structure and definitions
- Your Emergency Management staffing chart (roster)
- Roles and responsibilities
- Authorities
- Concept of Operations



Copyright © Bickmore Risk Services



20

Exercise Your Plan



Copyright © Bickmore Risk Services



The Reality is...

- Most emergencies are manageable with available resources
- They're small in scale and short duration
- They are not big enough to trigger the whole SEMS organization
- Most non-public safety agencies will never engage in a large scale event
- Financial reimbursement is not guaranteed

Copyright © Bickmore Risk Services



Low Probability/High Impact vs. High Probability/Low Impact

- Most emergency planning and corresponding Management Plans focus on Low Probability/High Impact scenarios



Copyright © Bickmore Risk Services



Low Probability/High Impact vs. High Probability/Low Impact

- However, what's most likely to affect you and your agency?
 - Common emergencies that are relatively small scale



Copyright © Bickmore Risk Services



What to Include in Your EAP?

- ✓ AUTHORITY TO ACT
- ✓ Generic Concept of Operations to allow decision making flexibility to fit the situation
- ✓ Mutual aid and business disaster support agreements
- ✓ Emergency employee contact list with alternates



Copyright © Bickmore Risk Services



25

EAP Checklist for Continuity

- ✓ Local hazard and threat analysis
- ✓ Resource directory
- ✓ What are your mandated functions?
- ✓ Who in your organization knows how to do these things without benefit of your normal support systems?



Copyright © Bickmore Risk Services



EAP Checklist for Continuity

- ✓ Alternate work sites and minimum requirements
- ✓ Operating agreements with neighboring jurisdictions
- ✓ Contact process for essential employees
- ✓ Alternate policies which can be activated



Copyright © Bickmore Risk Services



EAP Checklist for Continuity

- ✓ Alternatives for transportation, deliveries, other services
- ✓ Identify non-essential services
- ✓ Identify critical records



Copyright © Bickmore Risk Services



It's a Process

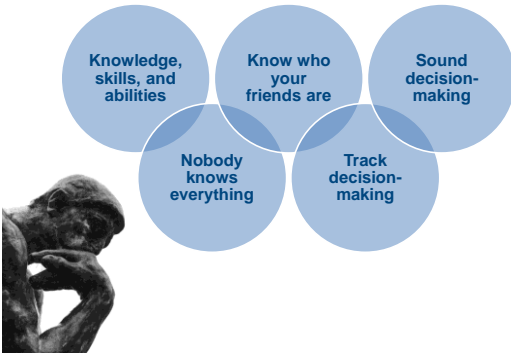
- Hazard & Threat Analysis gives a range of realistic challenges
- A Continuity Plan Provides the Objectives
 - Continuity of Operations or
 - Continuity of Government
 - Concept of Operations
- The Emergency Action Plan provides an organizational focus to support Continuity and return to normal operations



Copyright © Bickmore Risk Services

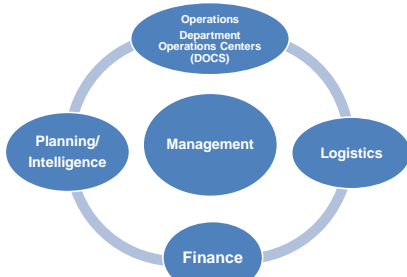


Decision Making



30

SEMS 5 Core Functions



Copyright © Bickmore Risk Services



31

Who's In Charge?

- **Everybody's in Charge**
- **Nobody's in Charge**
- **Jurisdiction is necessary to have command authority**



Copyright © Bickmore Risk Services



32

Policy

- Consider developing Emergency Ordinances pre-event
 - Activated upon local declaration
- Policy Groups and Multi Agency Coordination System (MACS)
- Coordination between involved jurisdictions is vital



Copyright © Bickmore Risk Services



33

Politics

- The Politicians' and Executives' Roles



Copyright © Bickmore Risk Services



34

A Few Cautions

- You may have to make things worse before you can make them better
- Be cautious of extending impacts to the otherwise unaffected
- People won't wait very long for decisions that affect their personal recovery



Copyright © Bickmore Risk Services



35

It is Just an Emergency

- Use SEMS/NIMS as applicable
- Follow the process
- It's your jurisdiction
- Incidents can be managed with simple structures
- Apply your knowledge, skills and abilities to a new context



Copyright © Baltimore Risk Services



Good Online Resources

- California Emergency Management Agency: www.oes.ca.gov
- Federal Emergency Management Agency www.fema.gov
- International Association of Emergency Managers: www.iaem.com
- DRI International www.drii.org
- Ready.gov: www.ready.gov/business/plan/planning.html
- www.72hours.org

Copyright © Baltimore Risk Services



Questions???



Safety Inspections

Please join us on
November 2, 2011
for our webinar on
Cal/OSHA Inspections

Copyright © Bickmore Risk Services



*Thank
you*

Copyright © Bickmore Risk Services



Disclaimer

PLEASE BE ADVISED

Nothing in the written material shall be considered the legal advice of counsel. Any such questions should be directed to your own legal counsel. The purpose of this material is to help educate employers, employees, and others on how to control risk. The principals and employees of BRS assume no liability for any use of this information. This information is considered reliable, but we cannot assume its effectiveness or that all potential hazards are addressed. This information does not ensure compliance with federal, state or local regulations. Your use of this information is not a guarantee that losses will be prevented or reduced, nor is this information a substitute for your responsibility to administer your safety program.

Copyright © Bickmore Risk Services